



SAIVI SOLUTIONS 002361627-P

No. 81, Jalan Bukit Jelutong 1, Taman Bukit Jelutong 71700 Mantin, Negeri Sembilan
H/P: 013-6286618 Fax: 06-7571291 Email: saivisolution@gmail.com

SUBJECT : COMPANY CATALOG

SOLUTIONS AND SERVICE PROVIDED

- ❖ ELECTRICAL TEST MEASURING INSTRUMENT
- ❖ HV AND LV HIGH VOLTAGE PROTECTION SAFETY EQUIPMENT'S
- ❖ DESIGN AND ASSEMBLY ELECTRICAL AND ELECTRONIC CONTROL PANEL
- ❖ DESIGN AND DEVELOP INTEGRATED MONITORING SYSTEM
- ❖ DESIGN AND ASSEMBLY AUTOMATED TESTER
- ❖ DESIGN AND INSTALL RENEWABLE ENERGY SYSTEM
- ❖ CCTV INSTALLATION AND INTEGRATION FOR COMMERCIAL AND INDUSTRIAL
- ❖ COMMERCIAL WIRING AND CABLING WORK
- ❖ INSTRUMENTS AND PROTECTION RELAY CALIBRATION
- ❖ GENERATOR SERVICING

ELECTRICAL TEST AND MEASURING INSTRUMENTS



The Extech Instruments Division is a manufacturer and supplier of 15 major product categories of technically advanced, portable meters including millimeters, clamp meters, electrical testers, and environmental meters for the measurement of light, sound, temperature, humidity, airflow, RPMs, and water quality. The company has a strong presence in the electrical, HVACR, construction, manufacturing, plant/MRO, process and automation, environmental, electronics/testing, and field service/maintenance sectors worldwide



HIOKI electrical measuring instruments comprise four product groups: automatic test equipment, data recording equipment, electronic measuring instruments, and field measuring instruments. Collectively, these products are used in an extensive range of industries and fields, from research and development to facility and equipment maintenance and service.



Electronics are integrated into an increasing number of electrical and electro-mechanical systems. Fluke's comprehensive line of digital millimeters, electrical power analyzers, thermal imagers, insulation resistance testers, accessories, plus the integrated Scope Meter™ handheld test tools, are being used by a growing number of service technicians, plant engineers and installation and maintenance technicians. These tools provide them the ability to troubleshoot these complex new systems and detect problems quickly.



FLIR Systems, Inc. designs, develops, manufactures, markets, and distributes technologies that enhance perception and awareness. We bring innovative sensing solutions into daily life through our thermal imaging systems, visible-light imaging systems, locator systems, measurement and diagnostic systems, and advanced threat detection systems. Our products improve the way people interact with the world around them, enhance public safety and well-being, increase energy efficiency, and enable healthy and entertained communities.



HV AND LV HIGH VOLTAGE PROTECTION SAFETY EQUIPMENT'S



Seaward has over 70 years' experience in the design manufacture of market-leading electrical test equipment. Seaward's unrivalled range of electrical test equipment serves a wide variety of safety testing and precision measurement applications. For 25 years Seaward has been developing market-defining portable appliance testers, software and accessories for the PAT testing market



Since the introduction of Indura® in 1987, millions of garments have been used in successful protective clothing programs worldwide. Today, Indura® remains popular among specifiers in the metals industry and budget-conscious contractors for use in denim garments. It provides multipurpose protection from electric arc flash, flash fire, molten ferrous metal and welding exposures.



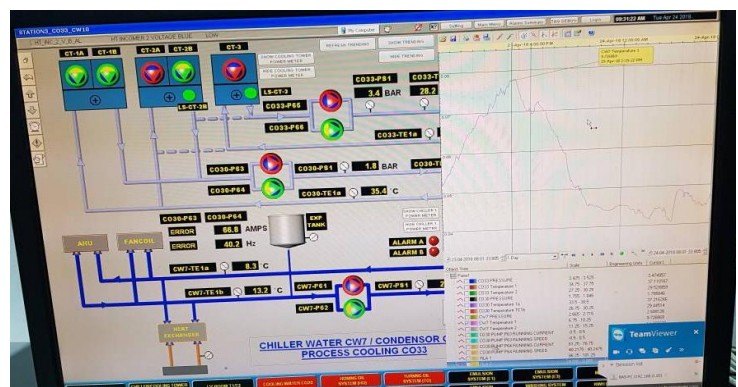
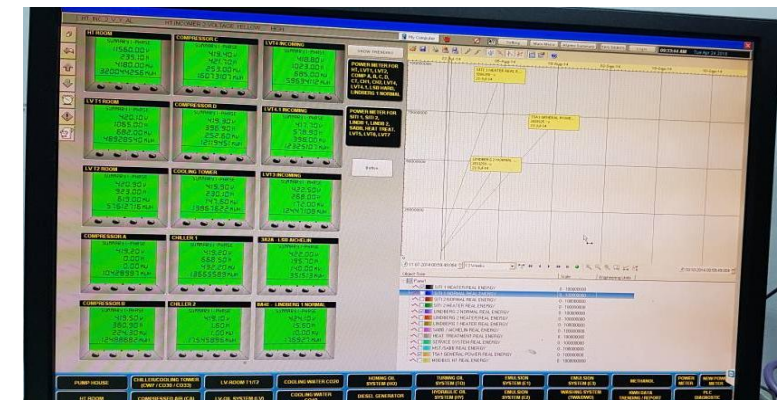
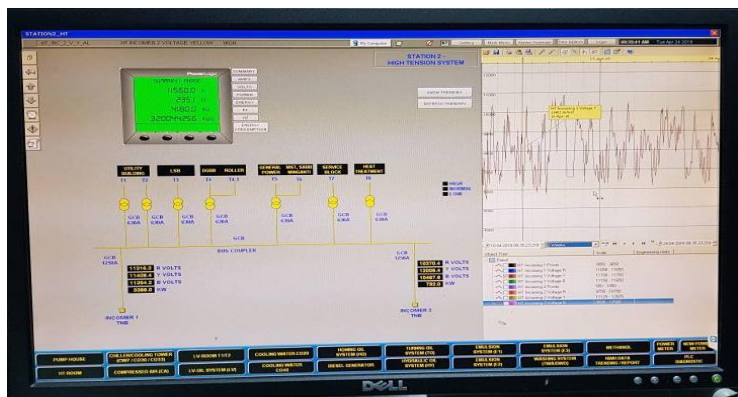
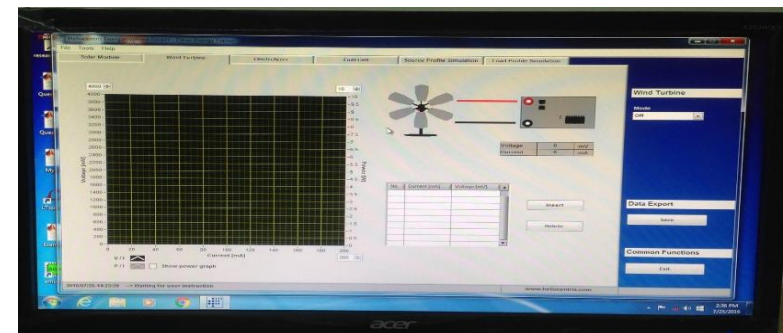
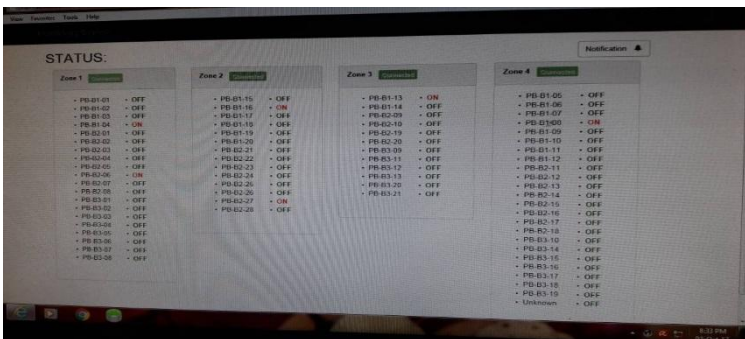
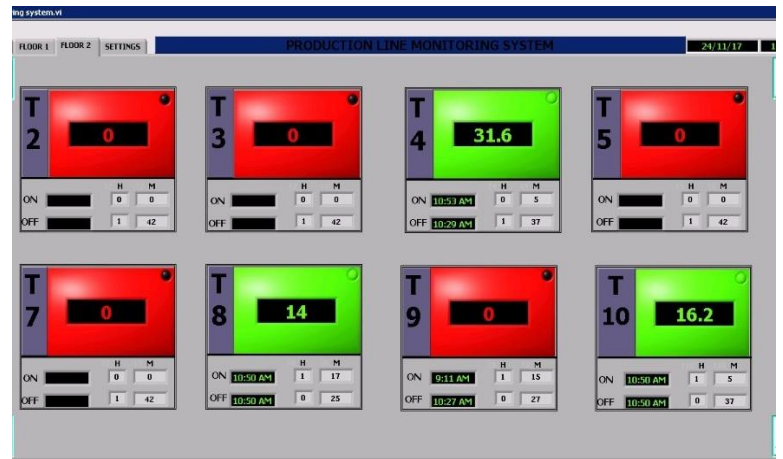
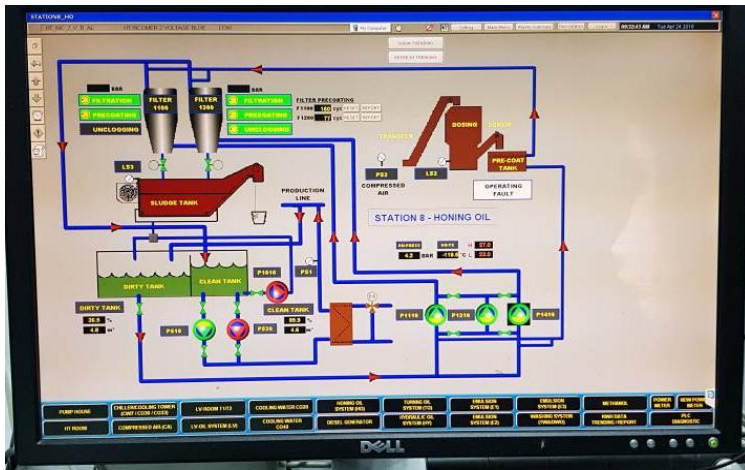
DESIGN AND ASSEMBLY ELECTRICAL AND ELECTRONIC CONTROL PANEL



DESIGN AND ASSEMBLY ELECTRICAL AND ELECTRONIC CONTROL PANEL

We are offers one source for control panel assembly, PLC control panels, harnessing, wiring and electronic assemblies with engineering services to ensure innovative design and quality products. We are here to improve your control panel assembly and save time through integration. We can make your wire harness an exact match to your control panel assembly, and ship it with install.

DESIGN AND DEVELOP INTEGRATED MONITORING SYSTEM



DESIGN AND DEVELOP INTEGRATED MONITORING SYSTEM

We also provide service design software for monitoring and PLC & Scada to control system to operate under a rather complicated and inefficient network monitoring system. These system will implement infrastructure management tools to report on the status from actual component connected with networks, and view from display with software we created.

DESIGN AND ASSEMBLY AUTOMATED TESTER



AUTOMATIC SCREW PACKING MACHINE

This machine are designed Full-Automatic Screw Packing Machine is widely applicable to the mixed packing of the accessorial mounting screws, nuts and small plastic parts for the electrical appliance, the decorative lamps and the decorative hardware and control system by Mitsubishi PLC. It replaces the shape forming manner of the pre-made bags, greatly increasing the work efficiency, so as to be widely adopted by many screw application enterprises

SOCKET PLUG TESTER

The test machine is designed for Schneider, Malaysia, according to they are requirement. It can do endurance testing for button switches and plug sockets. Test samples excessive worn and have other harmful consequences. The purpose is assessing whether the switch is able to withstand the normal use of mechanical damage and electrical fatigue damage, and whether the contacts has adhesion phenomenon, long-term closed or disconnected phenomena, to examine whether the test samples excessive worn and have other harmful consequences. It is a special test equipment for switches and plug-sockets electrical endurance test.



DESIGN AND INSTALL RENEWABLE ENERGY SYSTEM



SOLAR ENERGY

Photovoltaic (PV) is the most direct way to convert solar radiation into electricity. It is based on the photovoltaic effect. It is generally defined as the emergence of an electric voltage between two electrodes attached to a solid or liquid system upon shining light onto this system. These devices are also known as solar cells. Solar cells are packed into modules containing either a number of crystalline cells connected in series or a layer of thin film material internally connected in series. The module protects the cells from the environment. The module also delivers a higher voltage than a single cell develops voltage less than 1 V.

WIND ENERGY

Wind energy is one of the most flexible and tractable of all energy sources, since the mechanical energy derived directly from wind can be efficiently converted to other forms of energy. Wind results primarily by unequal heating of the earth's surface by the sun. Solar energy meets clouds, uneven surfaces and mountains while reaching the earth. This unequal heating causes temperature, density and pressure differences on the earth's surface that are responsible for local wind formation. The circulating planetary winds are caused by greater heating of the earth's surface near the equator than the poles.



CCTV INSTALLATION AND INTEGRATION FOR COMMERCIAL AND INDUSTRIAL



CCTV INSTALLATION AND INTERGRATION

Within today's physical security industry, "integration" is one term that is gaining some serious momentum. While truly interoperable systems were once a luxury for only the largest and most complex installations, now they are becoming a must have for medium sized and even small business and agencies. For value added resellers integration represents an exciting opportunity to grow your business now and throughout the future of the industry.

INDUSTRIAL AND COMMERCIAL WIRING AND CABLING WORK

WIRING AND CABLING WORK

Commercial areas wiring generally remains exposed, albeit within conduits for protection. These environments use thermoplastic wiring with nylon high resistance coating allowing placement within the conduit. Also, specific scenarios in a commercial environment determine the choice of wires. Industrial wiring also uses the three-phase power structure. Resultantly, there is less workload on each wire with enough scope for simultaneously functioning for optimizing the current output needed for heavy-duty equipment and devices



INSTRUMENTS AND PROTECTION RELAY CALIBRATION



CALIBRATION WORK

Electromechanical relays (not just earth fault relays) need to be calibrated to insure they are operating in the expected way. A simple over current ground relay will have a tap setting, and a time dial setting. These are chosen by a protection engineer to coordinate with other ground protection devices upstream and downstream. If the relay is not calibrated correctly, the relay will not operate at the expected tap value, or may operate slower / faster due to the time dial calibration being different than expected. This can cause over tripping, removing more equipment from the power system than is necessary to clear a fault.

GENERATOR SERVICING

GENSET SERVICE

Any generator set used for emergency or primary source must have periodic service and maintenance performed. Setting up a planned maintenance schedule, and performing all associated testing will insure generator availability upon demand.

